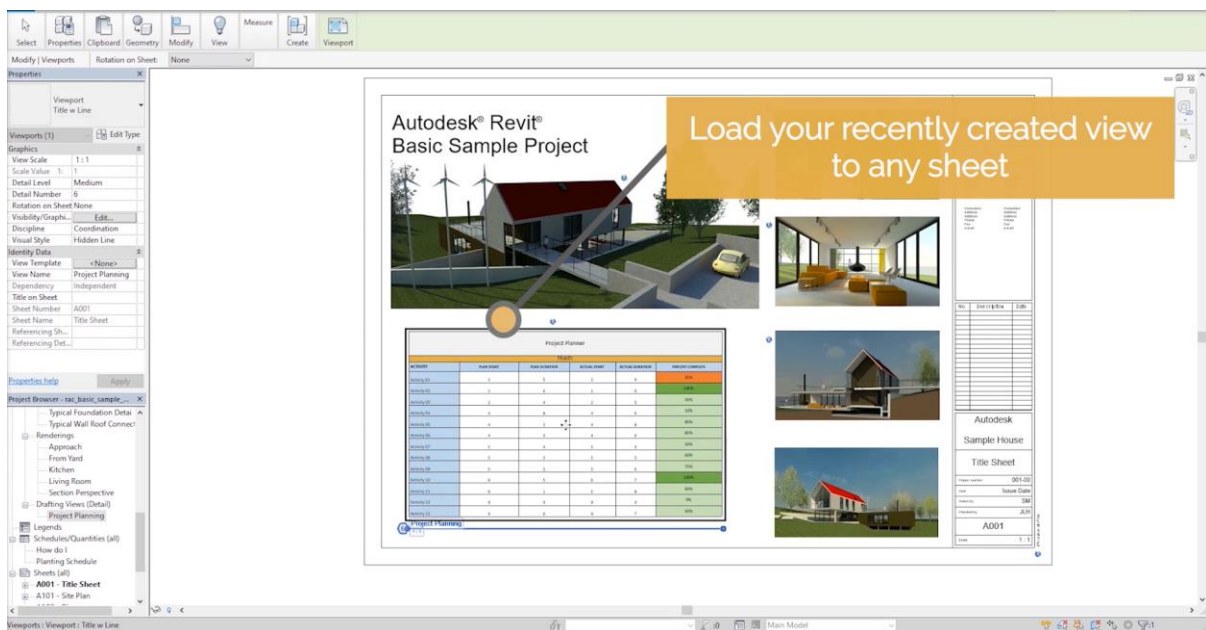


TableGen

How it works.

TableGen is a Revit add-in that allows you to import spreadsheets to Revit. The spreadsheet can be imported as 'Legend View', 'Schedule View' or 'Drafting View' that you can then drag to your drawing sheets in Revit.

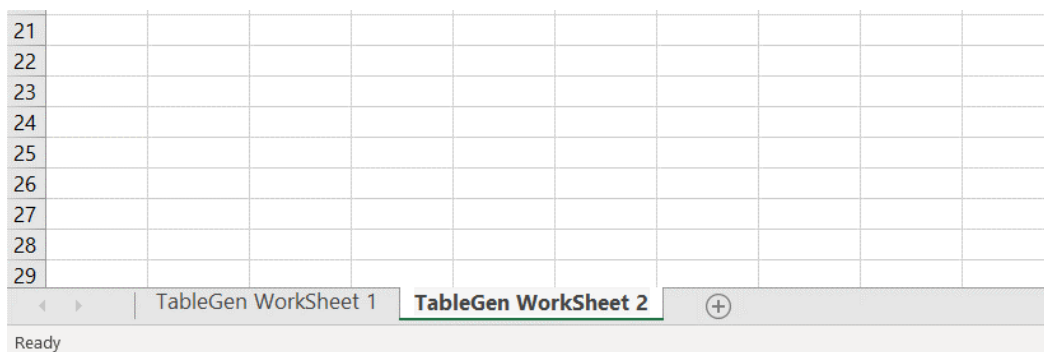
The process is fast, simple and easy! Next, we'll quickly explain to you how to use it.



How to use it.

Prepare your Excel spreadsheet to be imported

1. Open Excel and create a blank document.
2. Give a meaningful name to your worksheets, so you'll be able to identify them later.

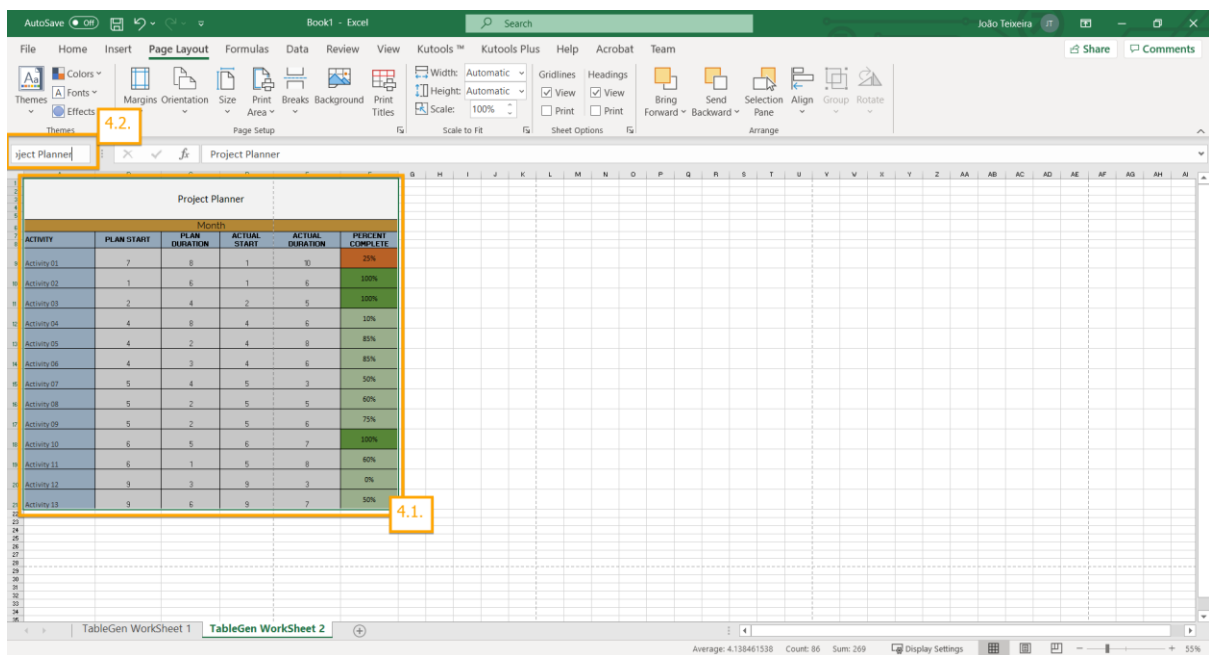


Disruptive Roots in a Digital era of connection.

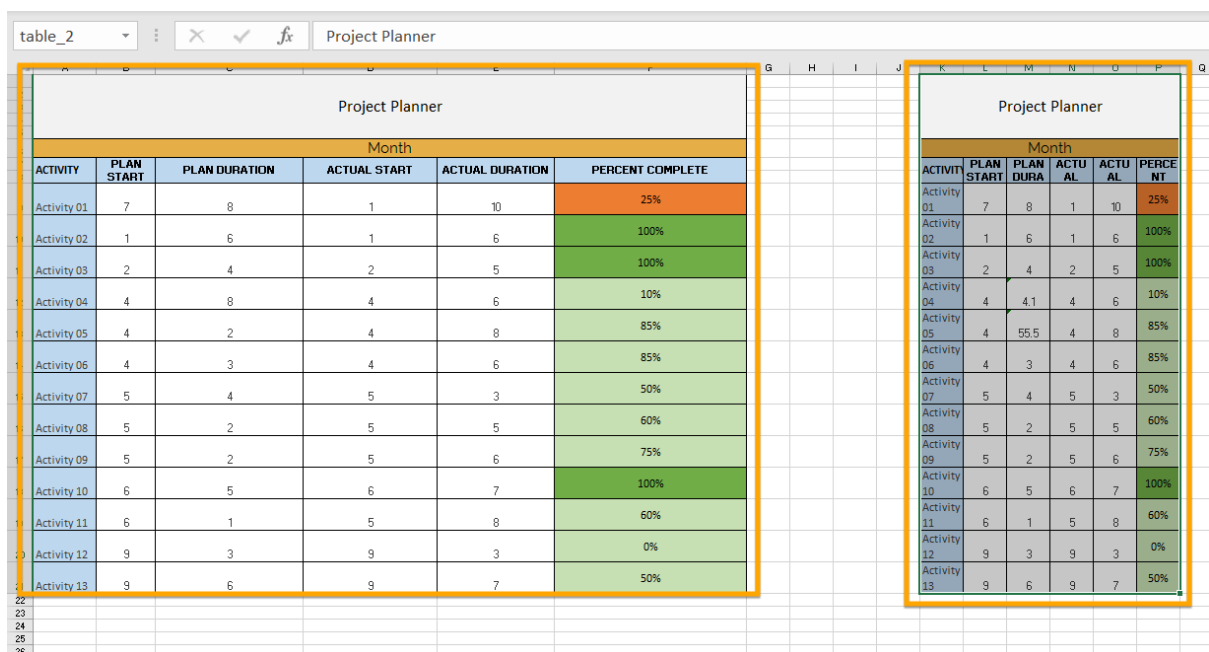
3. Insert your data in excel.
4. Create a worksheet region(s).
 - 4.1. Select the range of cells that you want to bring to Revit.
 - 4.2. Name the previously selected range of cells and hit 'Enter'.

This feature allows you to create multiple worksheet regions and each one can be individually imported to Revit as 'Legend View', 'Schedule View' or 'Drafting View'.

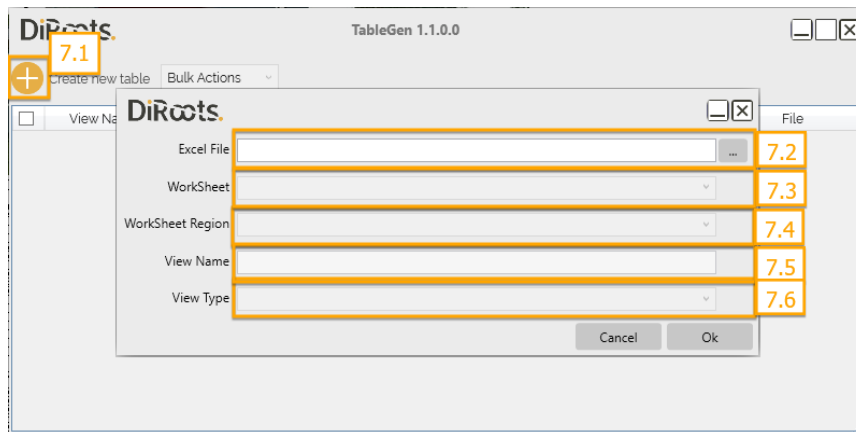
Note: give a reasonable margin to the text inside the cells.



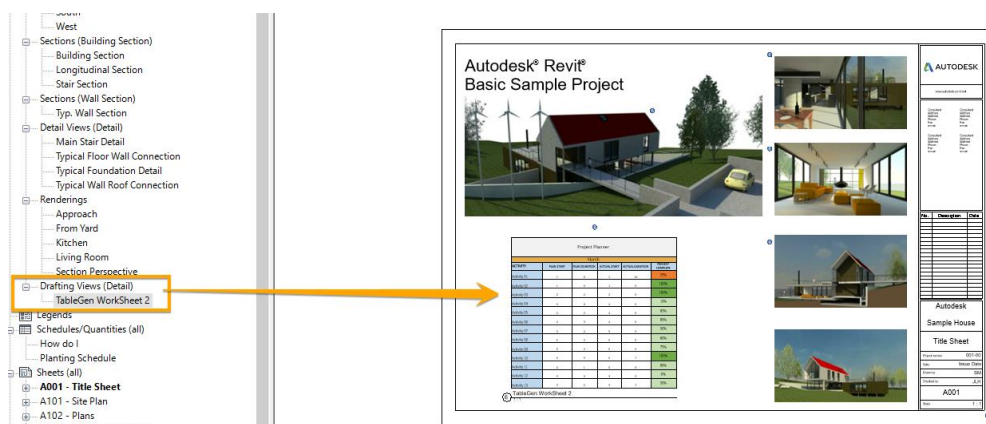
Example of multiple worksheet regions below:



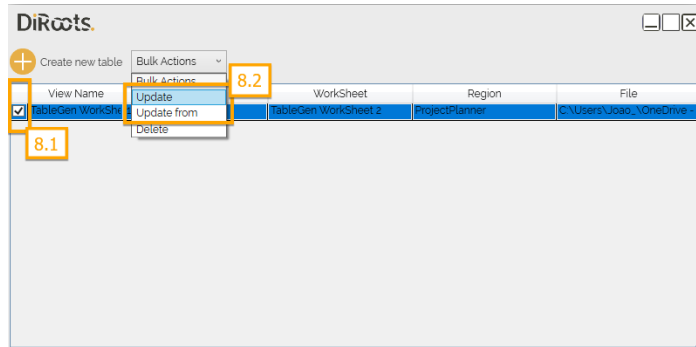
5. Save the document.
6. Open TableGen.
7. Importing spreadsheet as a 'Legend View', 'Schedule View' or 'Drafting View'.



- 7.1. Click the 'Plus' button to create a new table.
- 7.2. Select the spreadsheet you want to import.
- 7.3. Select the 'WorkSheet'.
- 7.4. Select the 'WorkSheet Region' (created at step 4 above).
- 7.5. Give a name to the 'Drafting View' that will be generated.
- 7.6. Select the type of view you want to generate ('Legend View', 'Schedule View' or 'Drafting View')
- 7.7. Click the 'Ok' button to generate the view
- 7.8. Drag and drop the recently created view to place it in an existing drawing sheet



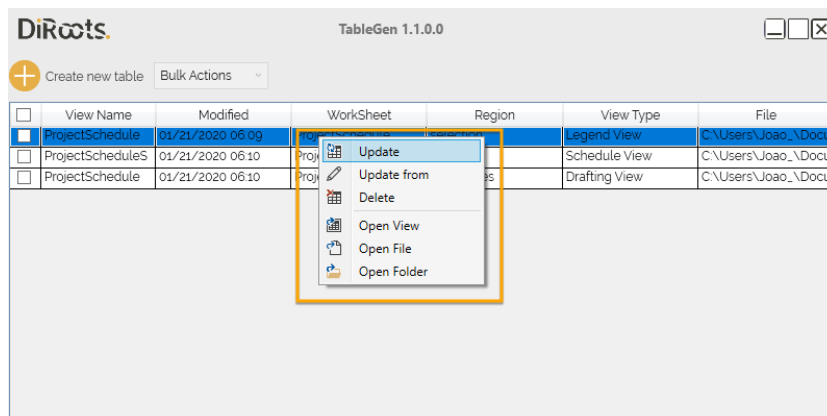
8. Updating or deleting your 'Drafting views'



8.1. Select the views you want to update.

8.2. Use the dropdown menu to either 'Update', 'Update from' (in case you've changed the location of the excel spreadsheet) and 'Delete'.

9. Using the Context Menu



TableGen has an extremely useful context menu that you can easily access by right-clicking on any of your recently created views.

Use it to:

- update, delete or open a view;
- directly open the spreadsheet corresponding to a view;
- access the spreadsheet location.